

# The best way to avoid conflict with bears is to prevent it.

Proper storage of your garbage is the best way to discourage bears from coming to your property. Bears are attracted to anything smelly or edible.

Responsibly store or remove any attractants, including

- ◆ Pet food
- ◆ Bird seed
- ◆ BBQ grills
- ◆ Fishing gear

Anything you can do to reduce odors will also help a great deal.

- ◆ Deodorize cans with bleach or ammonia
- ◆ Double bag garbage
- ◆ Separate “wet garbage” and keep it in an airtight container.
- ◆ Freeze meat and fish scraps and other smelly items until pickup day.

## Questions?

or to report garbage violations



Juneau Police Department, 586-0600  
bears@ci.juneau.ak.us

## A fed bear is a dead bear.

- ◆ Bears attracted to neighborhoods by garbage become problems for you, your neighbors (including kids!), and, eventually, for police.
- ◆ It is your responsibility to keep your garbage away from bears.
- ◆ Protect all of your neighbors—including bears—by keeping trash and other attractants away from bears.

### For more information:

[www.juneau.org/bears](http://www.juneau.org/bears)

(posted info includes weekly bear reports, photos of garbage storage solutions in use around Juneau, full text of local laws, and links to publications and other info on bears)

[bears@ci.juneau.ak.us](mailto:bears@ci.juneau.ak.us)



# Living with Bears

## How to Avoid Conflict



Prevent this from happening to YOUR garbage!! See inside....

# Local Garbage Ordinances in Effect

We in Juneau treasure the natural surroundings in which we live. We live in bear country and feel lucky to do so. In fact, because we understand our responsibility to the wildlife whose home we share, our community was among the first in the nation to enact local laws aimed at keeping bears out of garbage. As we continue to refine laws and practices, Juneau is becoming a model for other communities committed to living in harmony with wildlife.

Anyone disposing of trash in Juneau should be aware of the following:

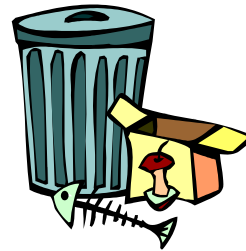
- **New in 2004:** Cans on the curb for pickup must have lids secured well enough that the lids won't pop off if cans are knocked over. Locking handles, bungee cords (crimp metal ends to can handles so cords remain permanently with the can), screw top lids: any of these will work.
- Cans must be labeled with your address.
- You may put out garbage cans for collection no sooner than 4 a.m. on pickup day.
- Other than after 4 a.m. on pickup day, garbage must be kept in a bear resistant container or enclosure.
- Dumpsters containing food waste must be fitted with metal lids or be behind barriers. Users: do not overfill the container and remember to secure the lid properly.



Secure lids help prevent birds from getting into cans and scattering trash.

## Where may garbage be stored?

- In a strong, fully enclosed structure such as a garage.
- In a "bear resistant enclosure"—that is, in an enclosure that you can't get into unless you use hands or tools. If it can be opened by stomping on it, kicking it, running into it with your body, or other similar actions, it doesn't qualify as bear resistant under city law.
- If your garbage has attracted bears and you fail to take steps to legally store your garbage, you will be cited and face a \$50 fine.



Improperly storing your food waste will get you a \$50 citation!

## Don't have a garage or other sturdy structure?

If you do not have the luxury of keeping your garbage cans in a garage or other fully-enclosed sturdy structure, here are some ideas for you:

- Visit [www.juneau.org/bears](http://www.juneau.org/bears) for garbage storage ideas, including a list of suppliers of bear resistant containers and info about bear-resistant reinforced tipper carts now available in Juneau.
- Work with others in your neighborhood. Contact Arrow Refuse (780-7800) to discuss solutions (such as tipper carts or dumpsters) that could be used in your area.
- Build your own enclosure. Use screws instead of nails, minimum 5/8 inch plywood, 2x4 construction, heavy duty hinges and latches, no seams that claws can get into, secure it so it can't be tipped. See examples at [www.juneau.org/bears](http://www.juneau.org/bears).

## What do I do if I see a bear?

Juneau is prime black bear habitat and it isn't uncommon to see bears traveling through neighborhoods. Black bears are rarely aggressive toward people and no serious attacks have ever been reported in Juneau.

### Is the bear eating natural foods and/or just passing through?

A black bear passing through is generally not a threat. If a bear is eating natural foods—such as berries or grass—leave it alone and give it time and space to leave. Unless the bear receives food rewards (e.g., garbage, dog food, birdseed), it will generally move on.

### Is the bear climbing onto property?

If the bear is climbing onto your porch or deck, encourage it to leave by banging pots or making other loud noises. After the bear leaves, remove any attractants.

### Is the bear getting into garbage?



If the bear is getting into your garbage, wait in a safe place—a car or house—until you are sure the bear has gone. Clean up whatever attracted it to your property, and keep trash cans inaccessible until the morning of pickup day. Don't give this or any other bear a chance to get another food reward.

**It's not just a good idea.  
It's the law.**